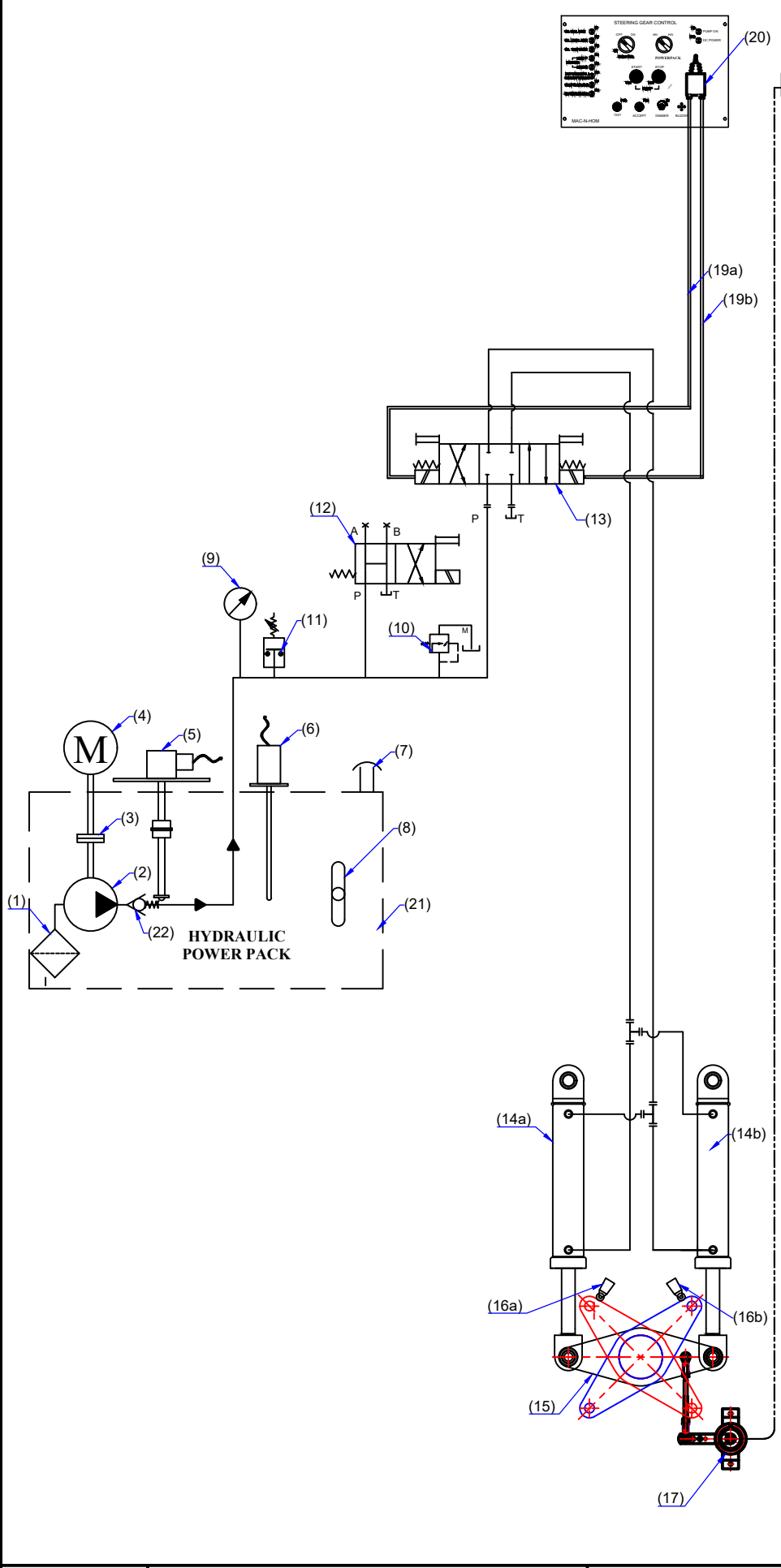


Electro-Hyd. Circuit - JumboZ-300E - Motor with Joystick Control



SI No.	Description
1	Suction Strainer
2	Hydraulic pump
3	Flexible Coupling
4	Electric Motor
5	Oil Level Sensor
6	Oil Temp. Sensor
7	Filler Breather
8	Level Gauge
9	Pressure Gauge
10	Pr. Relief Valve
11	Pre Switch Low Pre Alarm
12	Unloading Valve
13	Sol. Opertd. Dire. Control Valve
14a, 14b	Hyd. Actuator - JumboZ 300
15	Tiller Arm
16a, 16b	Limit Switch
17	Rudder Angle Sensor
18	Rudder Angle Indicator
19a, 19b	Elec. Lines to Sol. Opertd. Valve
20	Joystick Control Panel
21	Power pack Tank
22	Non-Return Valve